



Hormonal Physiology of Childbearing: Resources, Opportunities, Agenda

Maureen P. Corry
Senior Advisor

NACPM Webinar
Promoting Healthy Physiologic Birth in the U.S.
January 21, 2015

About us



Childbirth Connection is a core program of the National Partnership for Women & Families. Our mission is to improve the quality and value of maternity care through consumer engagement and health system transformation.

More information is available at:

- www.ChildbirthConnection.org
- Transform.ChildbirthConnection.org
- www.NationalPartnership.org

Appreciation

- **Sarah Buckley**
- **Carol Sakala**
- **Foreword team**
- **Funders**
 - Transforming Birth Fund
 - Lamaze International
 - DONA International



Hormonal Physiology of Childbearing **Report Features**

- **Foreword from leaders of 5 most relevant clinical disciplines**
- **Introduction, with core principles and related frameworks**
- **Physiologic onset of labor versus scheduled birth chapter**
- **Chapters on 4 hormone systems: OT, BEs, E-NE, PRL**
- **Conclusion and recommendations**
- **Appendix: resources for learning more, improving care**
- **1,141 references**

www.ChildbirthConnection.org/HormonalPhysiology

Freely Available Related Resources

- **Report pullouts**

- Executive summary
- Abstract and topline recommendations
- Full recommendations

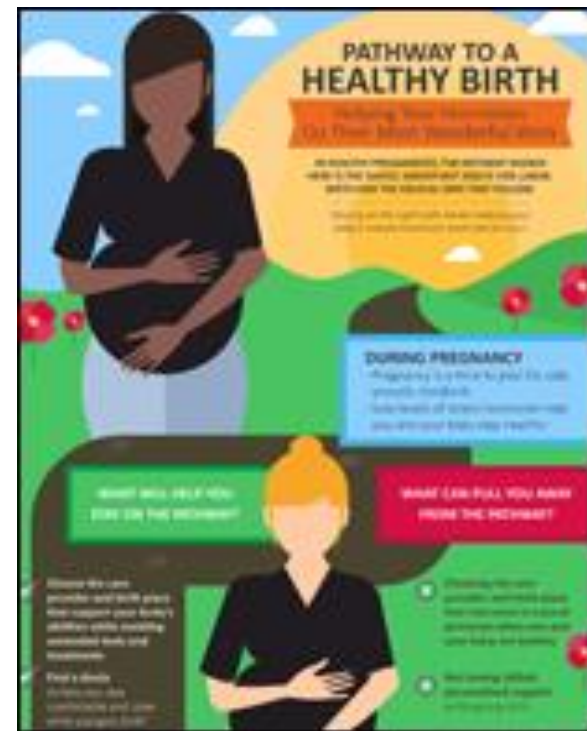
- **For women**

- Booklet (PDF)
- Infographic (including option for 11" x 17" printable poster/handout)

- **For clinicians**

- Fact sheets on core topics
- Infographic (including option for 11" x 17" printable poster/handout)

- **News release**



www.ChildbirthConnection.org/HormonalPhysiology

Related Resources Coming Soon

- **FAQs**
- **Full report outline**
- **Policymaker fact sheet**



US Maternity Care is at a Tipping Point

In 2014:

- **ACOG and SMFM gave recommendations to address cesarean overuse**
- **AWHONN position statement opposed elective induction and elective augmentation**
- **AWHONN issued refined performance measures for use of comfort measures, labor support, skin-to-skin contact**
- **AAN Choosing Wisely selection opposed routine electronic fetal monitoring in low-risk women**
- **ACNM launched its Healthy Birth Initiative with a physiologic birth toolkit**
- **The Joint Commission mandated collection, reporting of its Perinatal Care measure set in hospitals with 1,100+ births/yr**
- **CalSim project set goal of increasing VBAC rate in CA**

What does HPOC offer to midwives?

- **Core resource for expanding core competencies**
- **Core resource for education/continuing education**
- **Understand and explain why your care is safe and effective**
 - Students
 - Clients
 - Policymakers
- **Resource for developing/strengthening guidelines, protocols**
- **Mandate for implementing ACNM physiologic birth toolkit**
- **Mandate to complete CPM licensure in all jurisdictions**
- **Compelling, confidence-building info for engaging women**
- **Identification of priority questions for midwifery researchers**

Childbirth Connection's Ongoing Agenda

- **Continue to develop related resources for diverse audiences**
- **Follow up with key informants on action opportunities**
- **Convene National Advisory Council, develop Action Plan**
- **Publicize Action Plan**
- **Engage partners**
- **Implement priority Action Plan recommendations: CC working alone, in collaboration, or fostering work of others**

We encourage you to ...

- **Become familiar with available resources and their content**
- **Widely share link to collected resources:
ChildbirthConnection.org/HormonalPhysiology**
- **Incorporate content into your work (e.g., curricula, client education, policymaker outreach, practice improvement, core competencies)**
- **Adopt a colleague: share resources with more receptive colleagues and when opportunities arise**
- **Collaborate with CC to develop new related resources**
- **Join in implementing action plan**

Thank you!



**CHILDBIRTH
CONNECTION**

a program of the
national partnership for women & families

Contact me:

Maureen Corry
Senior Advisor
mcorry@nationalpartnership.org
917 439-7201

Find us:

www.ChildbirthConnection.org
Transform.ChildbirthConnection.org
www.NationalPartnership.org

Follow us:



www.facebook.com/ChildbirthConnection
www.twitter.com/Childbirth

www.facebook.com/NationalPartnership
www.twitter.com/NPWF